

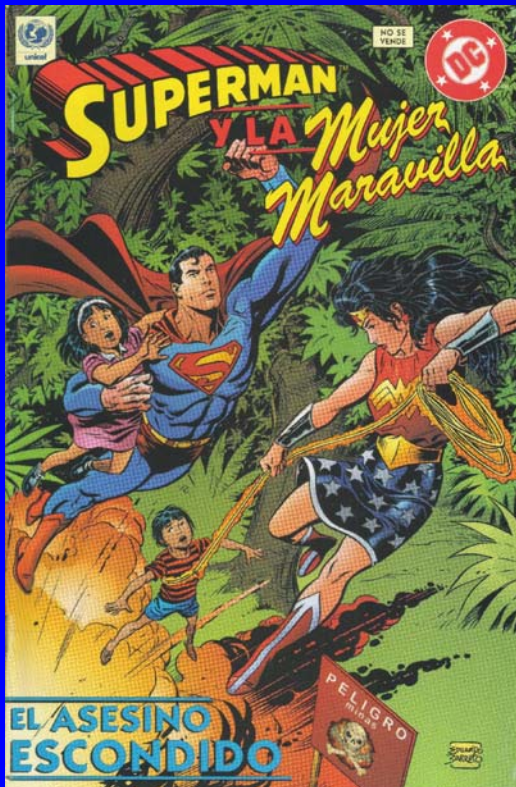
National Demining Commission



**NICARAGUA - EXPERIENCES
PREVENTIVE EDUCATION AND
AWARENESS CAMPAIGNS**

INITIAL EXPERIENCES

- ◆ In terms of the first actions, the didactic material and content of the programs had been designed without clear and accepted direction about the characteristics of a program of this type.



PHASE I: PAUSE AND EVALUATE

Workshop “UNA SOLA VOZ”

- ◆ Isolated efforts of other awareness initiatives. For example: literacy campaigns, education, health, etc.
- ◆ In some cases the awareness campaigns have been separated from the National Demining Program.
- ◆ There was no intersectoral integration and coordination within the framework of the National Demining Commission.
- ◆ Did not always count on the direct participation of communities in the formulation and execution of the initiatives.

PHASE II: DEFINE ACTIONS

- **Evaluate the actual necessities of the population at risk, considering economic and social aspects.**
- **Integrate the affected communities in the planning and execution of awareness programs.**
- **Harmonize the message to be disseminated to the communities.**
- **Coordinate activities in order to avoid the duplication of efforts and optimize resources.**
- **Establish criteria for charting and designing the material that will be distributed to the communities.**
- **Exchange information concerning lessons learned.**

WHAT TO DO?

- ◆ **Develop educative actions within the framework of a diagnostic of direct and indirect threat due to the presence of mines, constituting a reinvestment for the formulation of demining policies and plans.**
- ◆ **Incorporation of community criteria in the definition of the policies and priorities of the National Authorities.**
- ◆ **Strengthen Information Management.**
- ◆ **Messages constructed from and for the community taking into account the international directive for its development.**
- ◆ **Develop a guide with general orientations and basic contour about the message concerning accident prevention.**
- ◆ **Elaborate a National Preventive Education Plan.**
- ◆ **Remove in a definite manner the materials that do not comply with the national and international directive on the theme of prevention.**

Considerations for implementation

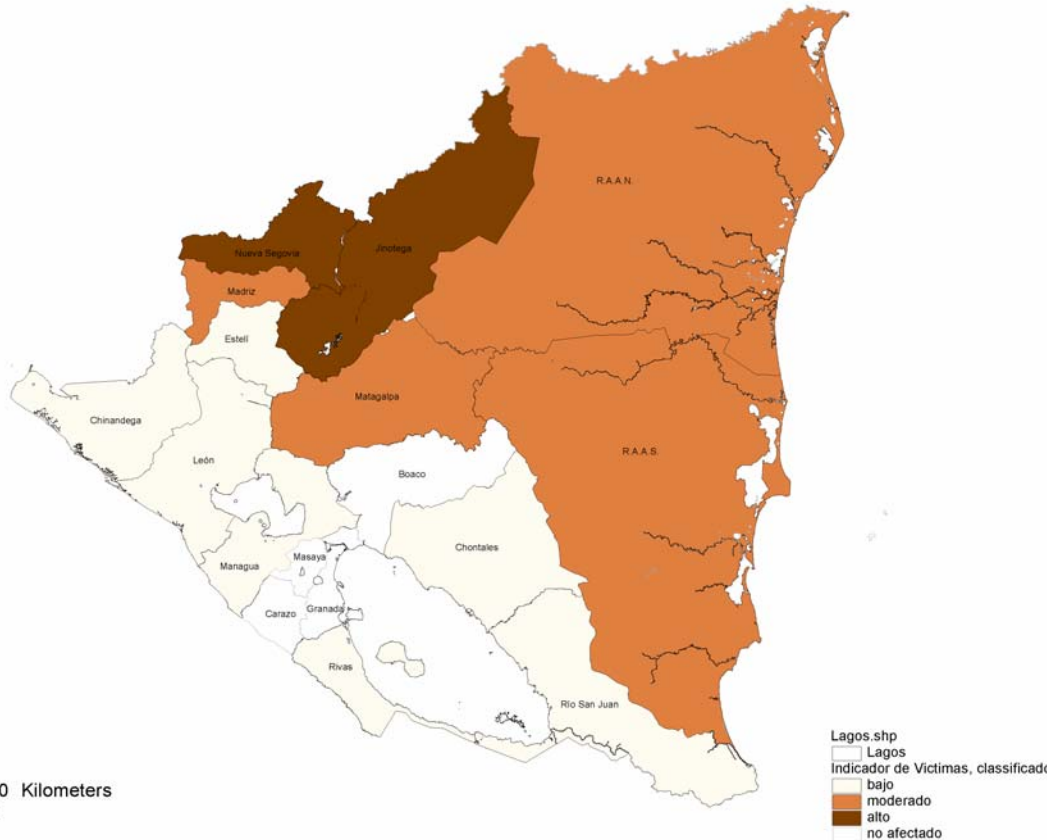
Magnitud and Geographic Distribution of the Problem



Control Nacional de Decretos



High
Moderate
Low
Not Affected



Sown Mines ?
Departments ?
Communities ?
Affected Crops ?
Population at Risk ?

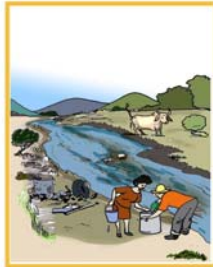


Where and in which way is the population affected?

¿Dónde han ocurrido más accidentes con minas y UXOs.?



✓ áreas naturalmente sombreadas, fuentes de agua o pozos, ríos, ojos de agua, riberas de ríos, caños, criques,



✓ zonas que hayan sido escenario de enfrentamientos bélicos.

✓ bases militares, lugares de alta seguridad y blancos militares;

✓ ruinas o lugares que no muestran señales de ser transitados, lugares desiertos con vegetación densa.



TOTAL DE VICTIMAS POR LESIONES CAUSADAS

PADCA-OEA
Managua, Nicaragua



PERDIDAS:

PIE:
PIERNA:
MANO:
BRAZO:
VISTA:
OIDO:

	IZQUIERDA	DERECHA
PIE:	102	84
PIERNA:	131	118
MANO:	36	26
BRAZO:	18	26
VISTA:	44	30
OIDO:	14	14

HERIDAS:

CABEZACUELLO
PECHO
ABDOMEN
ESPALDA
PELVIS
MIEMBROS SUPERIORES
MIEMBROS INFERIORES

CABEZACUELLO	63
PECHO	28
ABDOMEN	39
ESPALDA	25
PELVIS	7
MIEMBROS SUPERIORES	49
MIEMBROS INFERIORES	93

Total de Víctimas Por Minas(Incidente/Accidente)

572

INPRUDENT MANIPULATION OF ARTIFACTS



Although knowing the consequences of manipulating this type of artifact, the inhabitants imprudently defy made recommendations. Many people manipulate the mines, causing grave injuries.

Another aspect is that due to the lack of knowledge about what a mine looks like, its form, size, etc., inhabitants of high risk areas, especially children, manipulate these artifacts like toys.

SUDDEN ENVIRONMENTAL CHANGES



As a consequence of Hurricane Mitch, many mines were removed by the rains, changing their location, being dragged by the currents to other places. This has caused that the people that transit through certain areas are unaware that these areas are now of high risk.

What type of artifacts cause injuries?

Tipos de minas y artefactos explosivos (UXOs.) más comunes en Nicaragua.



How to protect yourself?

Medidas a tomar para prevenir accidentes por minas y UXOs.

- Viaje de día ● Camine por rutas conocidas

NO debe tocarlas.
NO debe intentar
desactivarla



Detenerse y guardar la calma



¡alto,
no sigan! aquí
hay minas!



Prevenir a otras personas
que no toquen las minas y
que no entren en áreas
minadas

NO jugar en los alrededores
de una área que se sospecha
que puede estar minada.
NO tirarle piedras ni otros objetos



IMSMA

(Information Management System For Mine Action)

“An Important Tool”

OAS Program

Solicit Complete Information

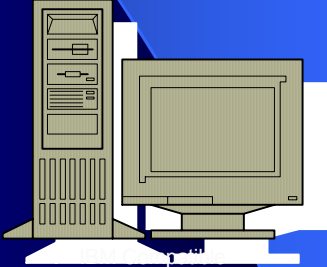


Transmit Form on Mine Risk Education (MRE)

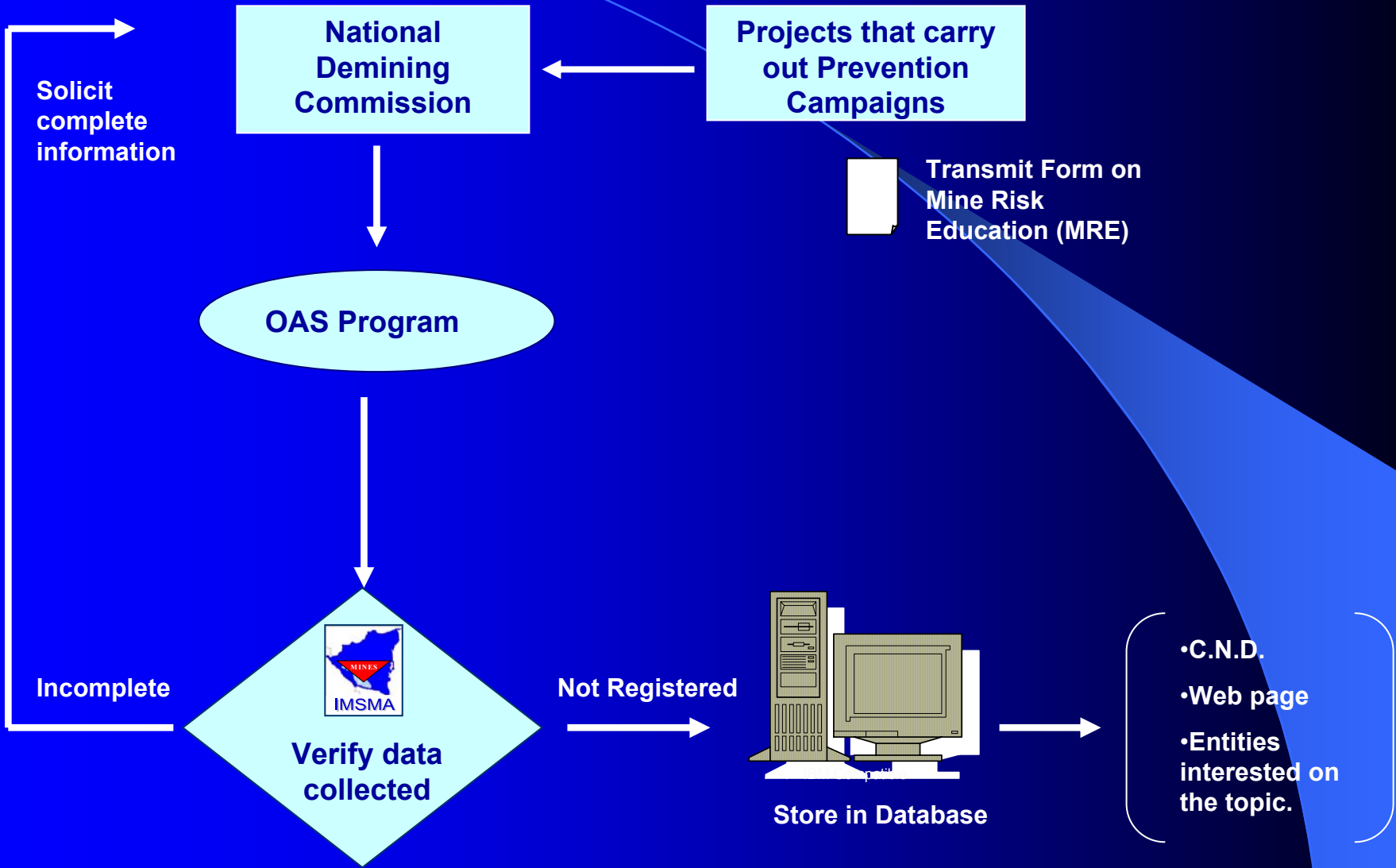


Verify Data Collected

Not Registered



Store in Database



National Demining Commission

Projects that carry out Prevention Campaigns

Solicit complete information

OAS Program

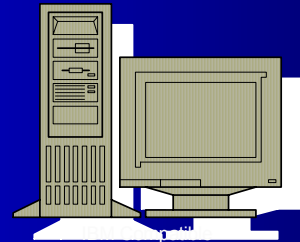
Transmit Form on Mine Risk Education (MRE)

Incomplete



Verify data collected

Not Registered



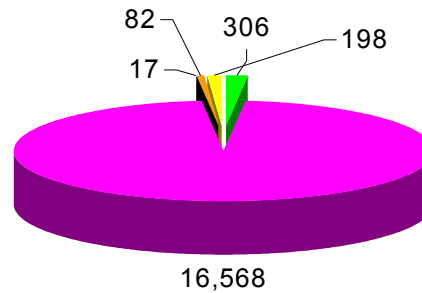
Store in Database

- C.N.D.
- Web page
- Entities interested on the topic.

Número de Personas Sensibilizadas
PADCA-OEA-NICARAGUA
2001-2002

Región	Departamento	Municipio	Total de Comunidades Sensibilizadas	Total Audiencia por Municipio	Total Audiencia Por Departamento	Total Audiencia Por Región
Región I	Madriz	<i>Las Sabanas</i>	1	15	1,417	21,038
		<i>San José de Cusmapa</i>	9	664		
		<i>San Lucas</i>	7	671		
		<i>Somoto</i>	3	67		
	Nueva Segovia	<i>Dipilto</i>	1	5	19,621	
		<i>Jalapa</i>	59	13,682		
		<i>Mozonte</i>	4	535		
		<i>Murra</i>	8	1,011		
		<i>Ocotol</i>	2	124		
		<i>San Fernando</i>	22	4,264		
Región III	Managua	<i>Managua</i>	1	17	217	217
		<i>Tipitapa</i>	1	200		
Región VI	Jinotega	<i>Cuá-Bocay</i>	2	210	622	1,058
		<i>Jinotega</i>	4	412		
	Matagalpa	<i>Matagalpa</i>	1	385	436	
		<i>Sébaco</i>	1	51		
Región VII	R.A.A.N.	<i>Puerto Cabezas</i>	1	198	198	198
Región VIII	R.A.A.S.	<i>Paiwas</i>	1	1,492	1,492	1,492
Totales				24,003	24,003	24,003

Audiencia Sensibilizada por Departamento Año 2002



■ Madriz ■ Nueva Segovia ■ Managua ■ Matagalpa ■ R.A.A.N.

Audiencia Sensibilizada por Departamento - Año 2002

Departamento	Municipios	Audiencia
Madriz	San José de Cusmapa	306
	San Lucas	
	Somoto	
Nueva Segovia	Jalapa	16,568
	Mozonte	
	Murra	
	San Fernando	
Managua	Managua	17
Matagalpa	Matagalpa	82
R.A.A.N.	Puerto Cabezas	198
TOTAL		17,171

NATIONAL DEMINING COMMISSION
NICARAGUA



THANK YOU VERY MUCH!!!

QUESTIONS, CONCERNS?